



ALTMAN SIEGEL

Liam Everett  
Laeh Glenn  
Chris Johanson  
Koak  
Shinpei Kusanagi  
Ruth Laskey  
Grant Mooney  
Trevor Paglen  
Sara VanDerBeek

Altman Siegel Presidio Heights | Opening December 12, 2024 | 3067 Sacramento Street, San Francisco



# ALTMAN SIEGEL

1150 25TH ST. SAN FRANCISCO, CA 94107

tel: 415.576.9300 / fax: 415.373.4471

www.altmansiegel.com

Altman Siegel is delighted to announce a temporary second space in the beautiful neighborhood of Presidio Heights. Opening December 12th, at 3067 Sacramento Street, this jewel-box gallery is designed to host intimate exhibitions and serve as a locus of information for the gallery and its artists.

Featuring works by Liam Everett, Laeh Glenn, Chris Johanson, Koak, Shinpei Kusanagi, Ruth Laskey, Grant Mooney, Trevor Paglen, and Sara VanDerBeek, among others, this selection of works reflect upon the subtle changing of the seasons and moments of transition. This inaugural installation also occasions a unique opportunity to present many of the gallery artists in tandem, revealing the conceptual and aesthetic concerns that have united the program for the past 15 years.

The flagship space in Dogpatch, at 1150 25th Street, with over 5000 square feet of exhibition space and private viewing rooms, will continue to host important exhibitions and operate with regular business hours. The Sacramento Street space will function as a second gallery to further highlight and deepen the gallery program, during the holiday season and beyond.

Altman Siegel was founded by Claudia Altman-Siegel in 2009. The program focuses on internationally recognized, museum-level artists whose work contributes to the cultural dialogue domestically and abroad. The gallery presents significant Bay Area artists in tandem with internationally acclaimed artists, often showing in San Francisco for the first time. The core gallery program focuses on leading contemporary artists, both emerging and established, and historical exhibitions which provide depth and context to our current moment. Our gallery artists actively participate in numerous exhibitions around the world each year and are frequently awarded with the most prestigious international grants and honors in our industry including: the MacArthur Genius Grant, special mention at 59th Venice Biennale, the John Simon Guggenheim Memorial Foundation Fellowship, and the Pollock Krasner Grant, among others. The gallery and its artists have also garnered international attention through significant features in various publications including: The New York Times, T Magazine, Frieze, Artforum, Mousse, The Brooklyn Rail, KQED, Juxtapoz, and Vogue among others. Visit one of our spaces to learn more.

Altman Siegel Presidio Heights  
3067 Sacramento Street  
San Francisco, CA 94115

Hours: Wednesday – Saturday, 11am-5pm  
January and beyond: Thursday – Saturday, 11am-5pm



Grant Mooney, *Housing (c.) xiv*, 2024

ALTMAN SIEGEL



Liam Everett  
*Untitled (cicada)*, 2024  
Ink, oil and sand on linen  
36 x 28 in  
91.4 x 71.1 cm  
(LE-P24-01)

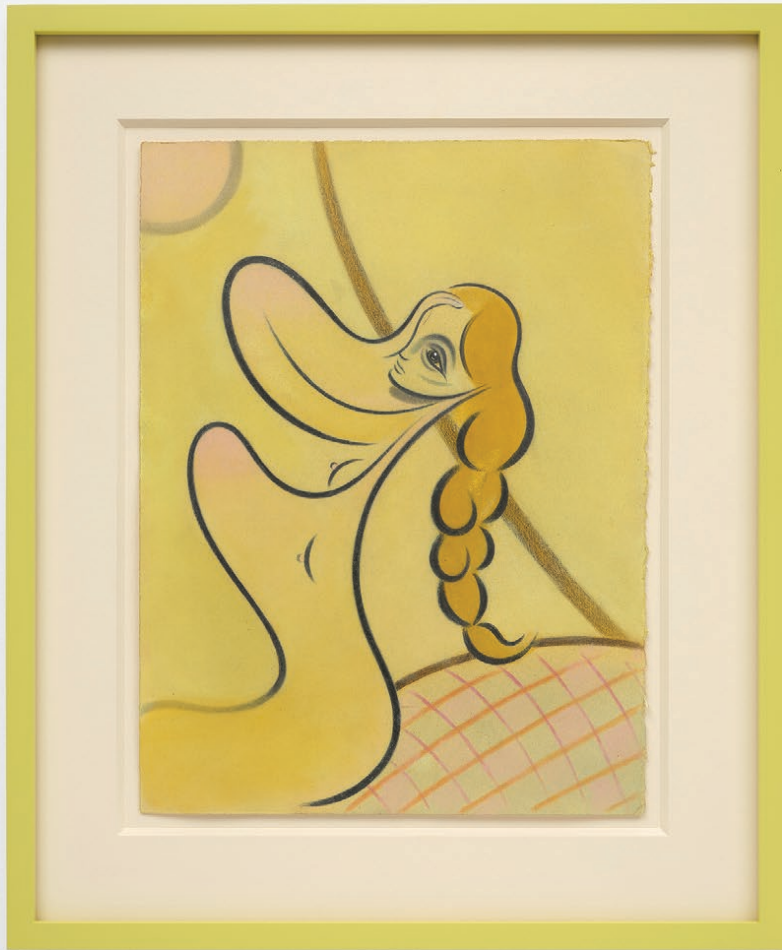
ALTMAN SIEGEL



Liam Everett  
*Untitled (cicada)*, 2024  
Ink, oil and sand on linen  
36 x 28 in  
91.4 x 71.1 cm  
(LE-P24-01)



ALTMAN SIEGEL



Koak  
*The Sunburn*, 2024  
Pastel, graphite, gouache, flashe, and  
casein on natural rag paper  
12 x 9 1/8 in  
30.5 x 23.2 cm  
(K-D24-13)



ALTMAN SIEGEL



Koak  
*The Sunburn*, 2024  
Pastel, graphite, gouache, flashe, and  
casein on natural rag paper  
12 x 9 1/8 in  
30.5 x 23.2 cm  
(K-D24-13)



ALTMAN SIEGEL



Koak  
*Sun Dour*, 2022  
Bronze  
15 x 15 x 10 in  
38.1 x 38.1 x 25.4 cm  
Edition of 12 plus 1 artist's proof  
(#2/12)  
(K-S22-02)



ALTMAN SIEGEL



Koak  
*Sun Dour*, 2022  
Bronze  
15 x 15 x 10 in  
38.1 x 38.1 x 25.4 cm  
Edition of 12 plus 1 artist's proof  
(#2/12)  
(K-S22-02)

ALTMAN SIEGEL



Koak, *Sun Dour*, 2022, Bronze, 15 x 15 x 10 in, 38.1 x 38.1 x 25.4 cm, Edition of 12 plus 1 artist's proof (#2/12), (K-S22-02)



ALTMAN SIEGEL



Chris Johanson, *Untitled*, 2023, Acrylic on canvas, 12 1/4 x 18 3/4 x 1 1/4 in, 31.1 x, 47.6 x 3.2 cm, (CJ-P23-03)



ALTMAN SIEGEL



Chris Johanson  
*Untitled* (detail), 2023  
Acrylic on canvas  
12 1/4 x 18 3/4 x 1 1/4 in  
31.1 x 47.6 x 3.2 cm  
(CJ-P23-03)



## ALTMAN SIEGEL



Grant Mooney  
*Housing (c.) xiv, 2024*  
Steel, electroplated steel, silver, brass,  
neodymium, copper coated poly-  
ethylene, paint, polymer resin, iron  
oxide  
14 x 7 x 3 1/2 in  
35.6 x 17.8 x 8.9 cm  
(GM-S24-09)

## ALTMAN SIEGEL



Grant Mooney  
*Housing (c.) xiv, 2024*  
Steel, electroplated steel, silver, brass,  
neodymium, copper coated poly-  
ethylene, paint, polymer resin, iron  
oxide  
14 x 7 x 3 1/2 in  
35.6 x 17.8 x 8.9 cm  
(GM-S24-09)



ALTMAN SIEGEL



Ruth Laskey  
*Twill Series (Loops 5)*, 2023  
Hand-woven and hand-dyed linen  
35 1/2 x 29 1/2 in  
90.2 x 74.9 cm  
Framed: 40 7/8 x 34 7/8 in  
103.8 x 88.6 cm  
(RL-P23-02)

ALTMAN SIEGEL



Ruth Laskey  
*Twill Series (Loops 5)*, 2023  
Hand-woven and hand-dyed linen  
35 1/2 x 29 1/2 in  
90.2 x 74.9 cm  
Framed: 40 7/8 x 34 7/8 in  
103.8 x 88.6 cm  
(RL-P23-02)



ALTMAN SIEGEL



Shinpei Kusanagi  
*They just disappear*, 2024  
Acrylic on canvas  
63 3/4 x 51 in  
162.1 x 129.5 cm  
(SK-P24-05)

ALTMAN SIEGEL



Shinpei Kusanagi  
*They just disappear*, 2024  
Acrylic on canvas  
63 3/4 x 51 in  
162.1 x 129.5 cm  
(SK-P24-05)



ALTMAN SIEGEL



Laeh Glenn  
*Midi*, 2021  
Oil on canvas, wood frame  
21 1/4 x 17 1/4 in  
54 x 43.8 cm  
(LG-P21-03)

ALTMAN SIEGEL



Laeh Glenn  
*Midi*, 2021  
Oil on canvas, wood frame  
21 1/4 x 17 1/4 in  
54 x 43.8 cm  
(LG-P21-03)



ALTMAN SIEGEL



Lynn Hershman Leeson  
*TV Legs*, 1988  
Silver gelatin print  
24 x 20 in  
61 x 50.8 cm  
Framed: 31 x 27 in  
78.7 x 68.6 cm  
Edition of 8 plus 2 artist's proofs  
(#6/8)  
(LHL-PH88-01)

ALTMAN SIEGEL



Lynn Hershman Leeson  
*TV Legs*, 1988  
Silver gelatin print  
24 x 20 in  
61 x 50.8 cm  
Framed: 31 x 27 in  
78.7 x 68.6 cm  
Edition of 8 plus 2 artist's proofs  
(#6/8)  
(LHL-PH88-01)

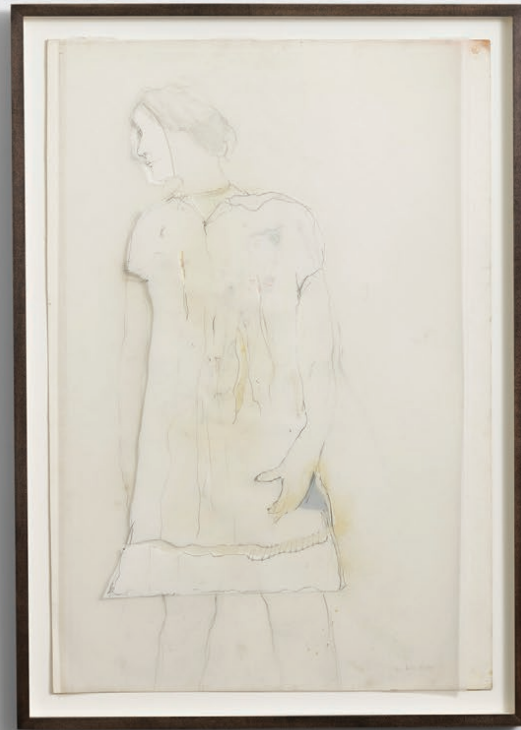


ALTMAN SIEGEL



Lynn Hershman Leeson  
*Seeing Inside*, 1964  
Collage, tracing paper, graphite, and  
acrylic on paper  
43 1/2 x 30 1/2 in  
110.5 x 77.5 cm  
Framed: 43 1/2 x 30 1/2 in  
110.5 x 77.5 cm  
(LHL-D64-01)

ALTMAN SIEGEL



Lynn Hershman Leeson  
*Seeing Inside*, 1964  
Collage, tracing paper, graphite, and  
acrylic on paper  
43 1/2 x 30 1/2 in  
110.5 x 77.5 cm  
Framed: 43 1/2 x 30 1/2 in  
110.5 x 77.5 cm  
(LHL-D64-01)



ALTMAN SIEGEL



Zheng Chongbin  
*Rotating Shadow*, 2023  
Acrylic, ink, Xuan paper on panel  
58 1/2 x 49 1/4 in  
148.6 x 125.1 cm  
(ZC-P23-04)



ALTMAN SIEGEL



Zheng Chongbin, *Rotating Shadow*, 2023, Acrylic, ink, Xuan paper on panel, 58 1/2 x 49 1/4 in, 148.6 x 125.1 cm, (ZC-P23-04)

ALTMAN SIEGEL



Zheng Chongbin  
*Rotating Shadow*, 2023  
Acrylic, ink, Xuan paper on panel  
58 1/2 x 49 1/4 in  
148.6 x 125.1 cm  
(ZC-P23-04)



ALTMAN SIEGEL



Trevor Paglen  
*Near Promontory Point (undated)*,  
2024  
Pigment print  
16 x 16 in  
40.6 x 40.6 cm  
Framed: 16 3/4 x 16 3/4 in  
42.5 x 42.5 cm  
Edition of 3 plus 1 artist's proof  
(#1/3)  
(TP-PH24-506)

ALTMAN SIEGEL



Trevor Paglen  
*Near Promontory Point (undated)*,  
2024  
Pigment print  
16 x 16 in  
40.6 x 40.6 cm  
Framed: 16 3/4 x 16 3/4 in  
42.5 x 42.5 cm  
Edition of 3 plus 1 artist's proof  
(#1/3)  
(TP-PH24-506)

ALTMAN SIEGEL



Trevor Paglen  
*MILSTAR 3 in Sagittarius (Inactive  
Communication and Targeting  
Satellite; USA 143)*, 2008

C-print  
37 1/2 x 30 in  
95.25 x 76.2 cm  
Framed: 38 1/4 x 30 3/4 in  
97.16 x 78.11 cm  
Edition of 5 plus 2 artist's proofs  
(#4/5)  
(TP-PH08-54)



## ALTMAN SIEGEL



Trevor Paglen  
*MILSTAR 3 in Sagittarius (Inactive  
Communication and Targeting  
Satellite; USA 143)*, 2008  
C-print  
37 1/2 x 30 in  
95.25 x 76.2 cm  
Framed: 38 1/4 x 30 3/4 in  
97.16 x 78.11 cm  
Edition of 5 plus 2 artist's proofs  
(#4/5)  
(TP-PH08-54)

ALTMAN SIEGEL



Alex Olson  
*Untitled*, 2021  
Oil and modeling paste on gessoed  
paper  
17 x 14 in  
43.2 x 35.6 cm  
Framed: 19 x 16 1/4 in  
48.3 x 41.3 cm  
(AO-D21-02)

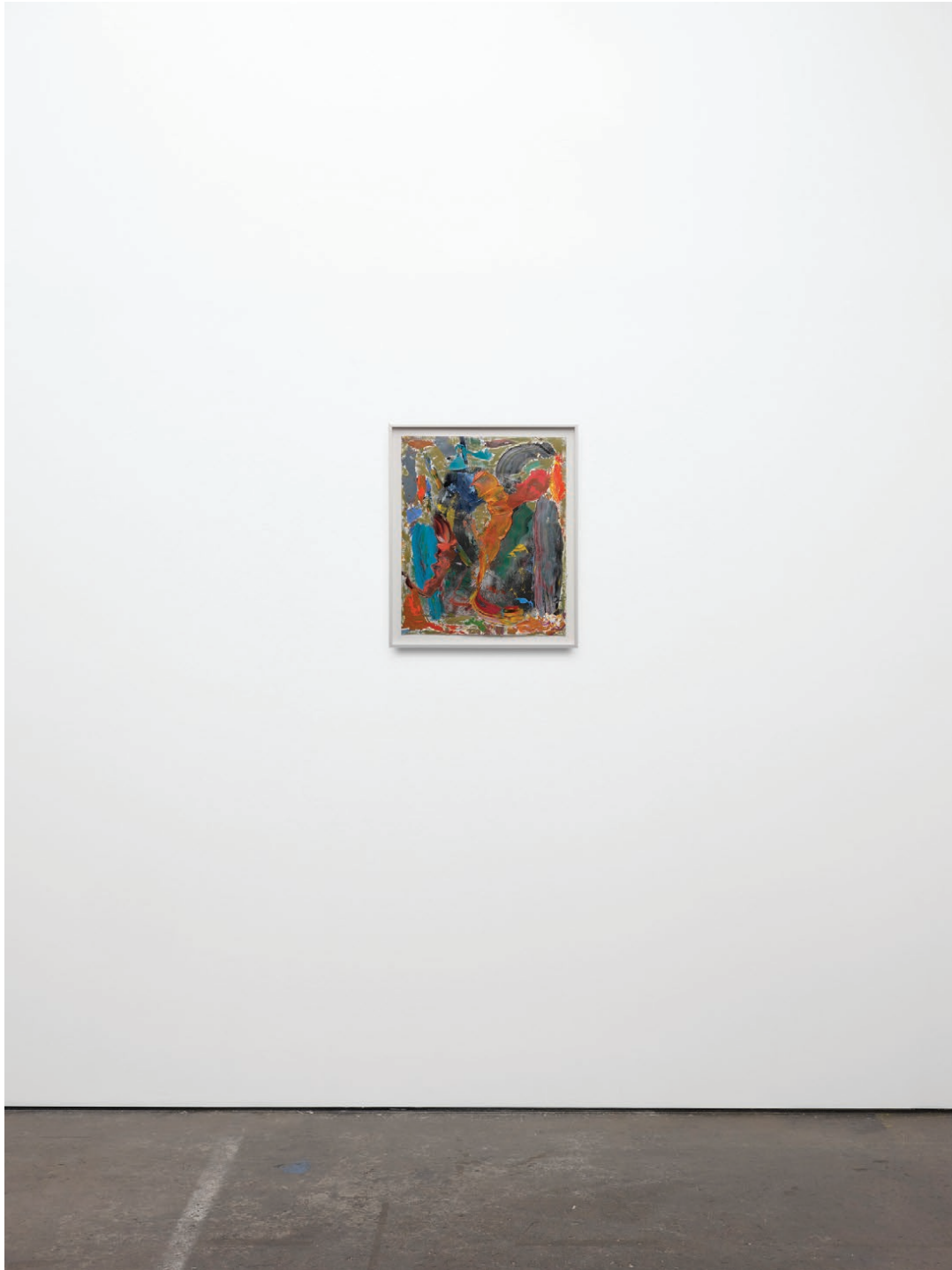
ALTMAN SIEGEL



Alex Olson  
*Untitled*, 2021  
Oil and modeling paste on gessoed  
paper  
17 x 14 in  
43.2 x 35.6 cm  
Framed: 19 x 16 1/4 in  
48.3 x 41.3 cm  
(AO-D21-02)



## ALTMAN SIEGEL



Alex Olson  
*Untitled*, 2021  
Oil and modeling paste on gessoed  
paper  
17 x 14 in  
43.2 x 35.6 cm  
Framed: 19 x 16 1/4 in  
48.3 x 41.3 cm  
(AO-D21-02)

ALTMAN SIEGEL



Alex Olson  
*Untitled*, 2021  
Oil and modeling paste on gessoed  
paper  
17 x 14 in  
43.2 x 35.6 cm  
Framed: 19 x 16 1/4 in  
48.3 x 41.3 cm  
(AO-D21-09)

ALTMAN SIEGEL



Alex Olson  
*Untitled*, 2021  
Oil and modeling paste on gessoed  
paper  
17 x 14 in  
43.2 x 35.6 cm  
Framed: 19 x 16 1/4 in  
48.3 x 41.3 cm  
(AO-D21-09)



ALTMAN SIEGEL



Sara VanDerBeek  
*Setting Sun IV*, 2017  
Two layered digital c-prints  
20 x 14 1/2 in  
50.8 x 36.8 cm  
Framed: 20 1/2 x 15 in  
52.1 x 38.1 cm  
Edition of 3 plus 1 artist's proof  
(#1/3)  
(SV-PH17-07)

ALTMAN SIEGEL



Sara VanDerBeek  
*Setting Sun IV*, 2017  
Two layered digital c-prints  
20 x 14 1/2 in  
50.8 x 36.8 cm  
Framed: 20 1/2 x 15 in  
52.1 x 38.1 cm  
Edition of 3 plus 1 artist's proof  
(#1/3)  
(SV-PH17-07)

ALTMAN SIEGEL



Sara VanDerBeek  
*Setting Sun III*, 2017  
Two layered digital c-prints  
20 x 14 1/2 in  
50.8 x 36.8 cm  
Framed: 20 1/2 x 15 in  
52.1 x 38.1 cm  
Edition of 3 plus 1 artist's proof  
(#1/3)  
(SV-PH17-06)

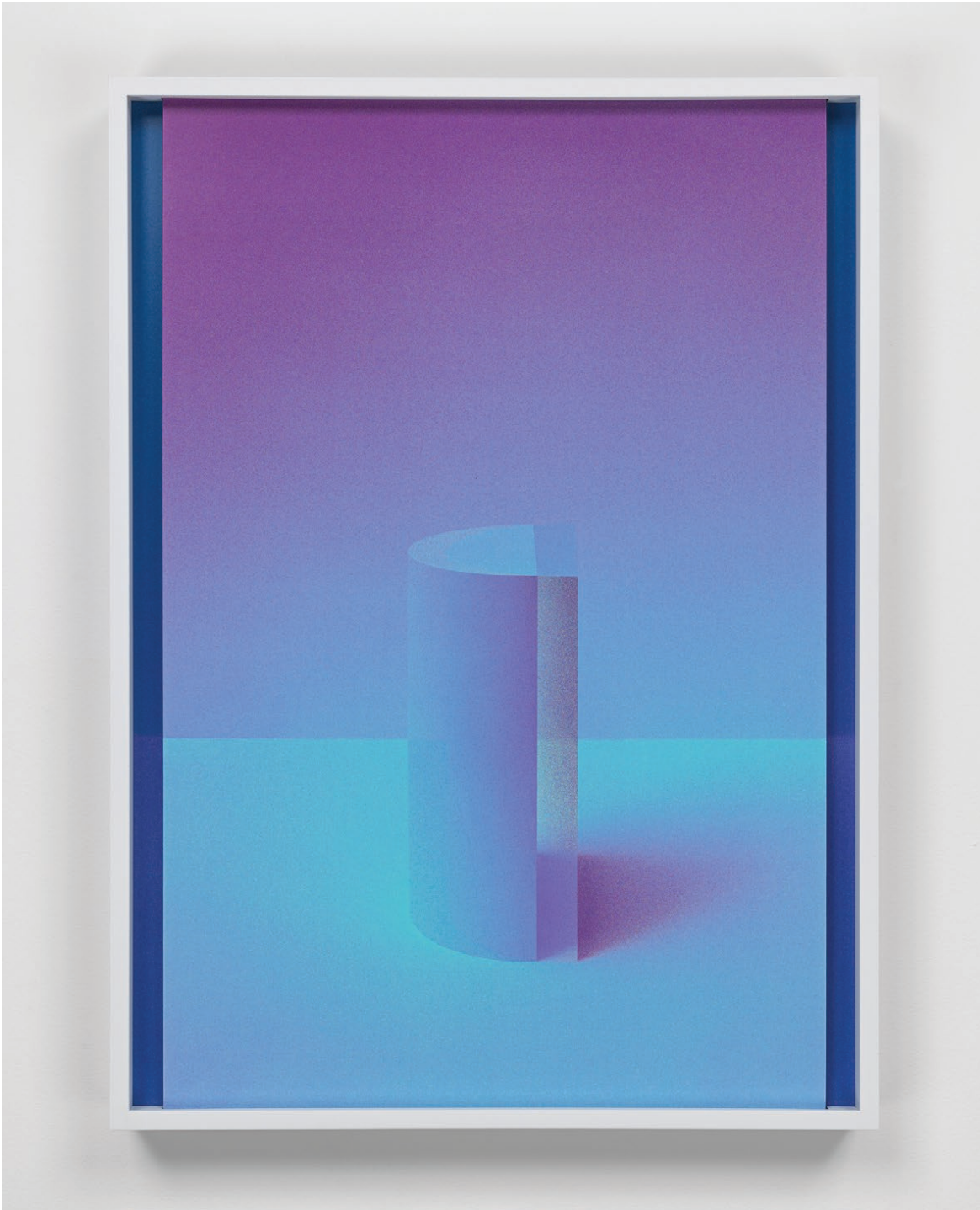


ALTMAN SIEGEL



Sara VanDerBeek  
*Setting Sun III*, 2017  
Two layered digital c-prints  
20 x 14 1/2 in  
50.8 x 36.8 cm  
Framed: 20 1/2 x 15 in  
52.1 x 38.1 cm  
Edition of 3 plus 1 artist's proof  
(#1/3)  
(SV-PH17-06)

ALTMAN SIEGEL



Sara VanDerBeek  
*Setting Sun VI*, 2017  
Two layered digital c-prints  
20 x 14 1/2 in  
50.8 x 36.8 cm  
Framed: 20 1/2 x 15 in  
52.1 x 38.1 cm  
Edition of 3 plus 1 artist's proof  
(#1/3)  
(SV-PH17-09)

ALTMAN SIEGEL



Sara VanDerBeek  
*Setting Sun VI*, 2017  
Two layered digital c-prints  
20 x 14 1/2 in  
50.8 x 36.8 cm  
Framed: 20 1/2 x 15 in  
52.1 x 38.1 cm  
Edition of 3 plus 1 artist's proof  
(#1/3)  
(SV-PH17-09)